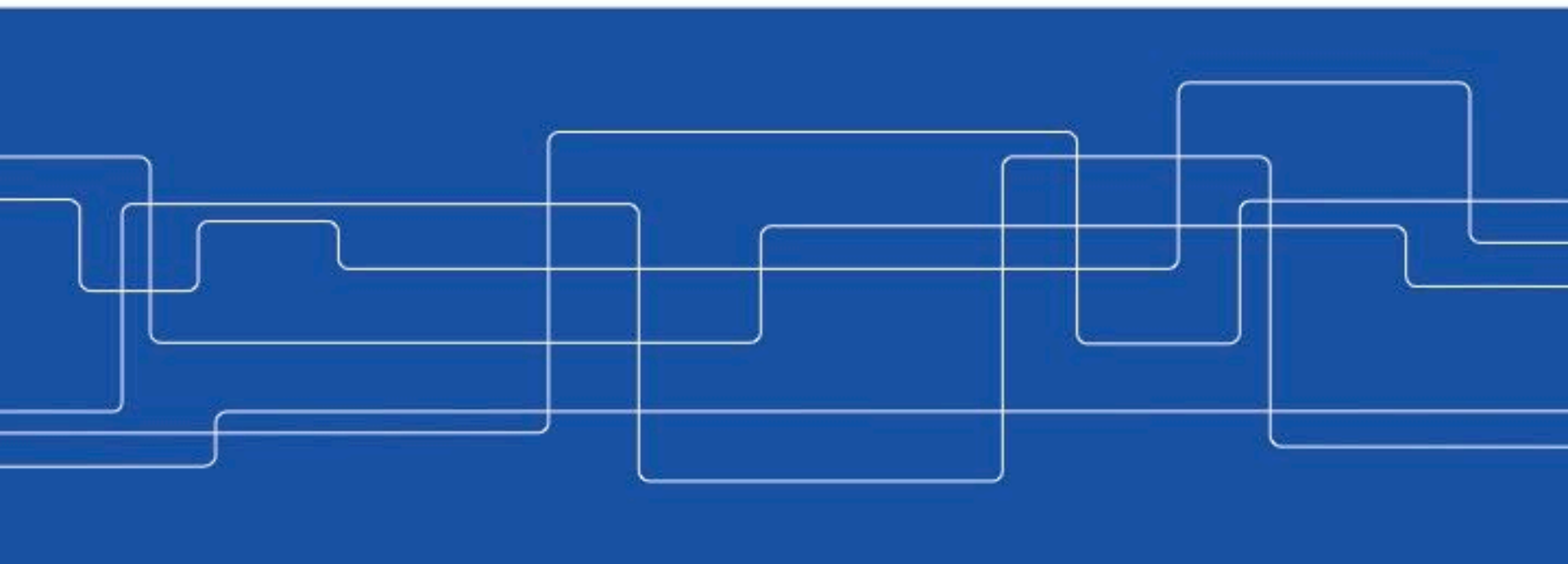




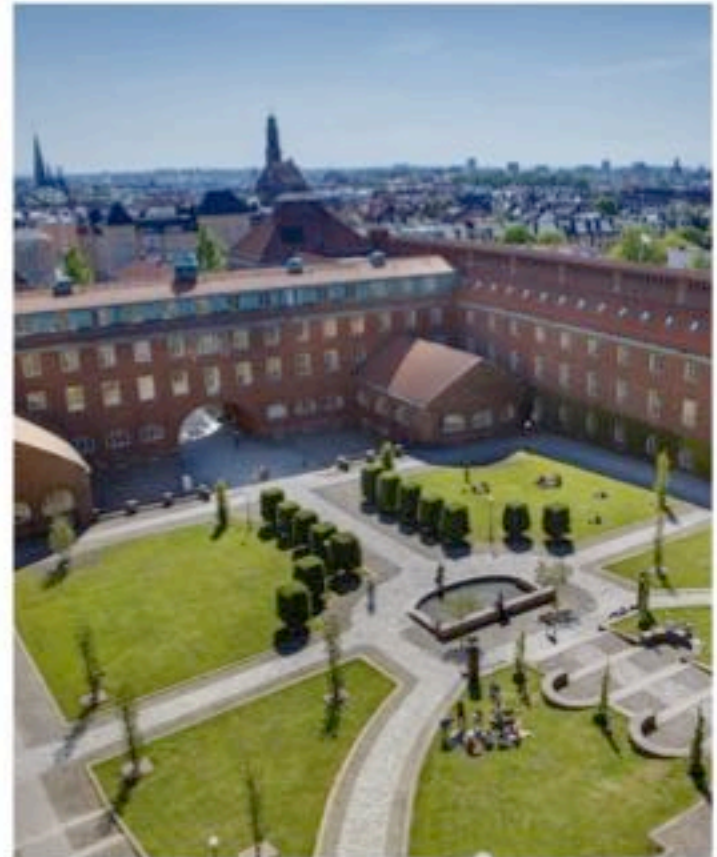
KTH in brief





Sweden's leading university of technology

- Sweden's oldest and largest university of technology
- More than 12,000 full-time students
- More than 1,900 PhD Students
- Over 5,100 employees
- Five campuses in the Stockholm region
- Ranked as the 126th best university of technology in the world by THE



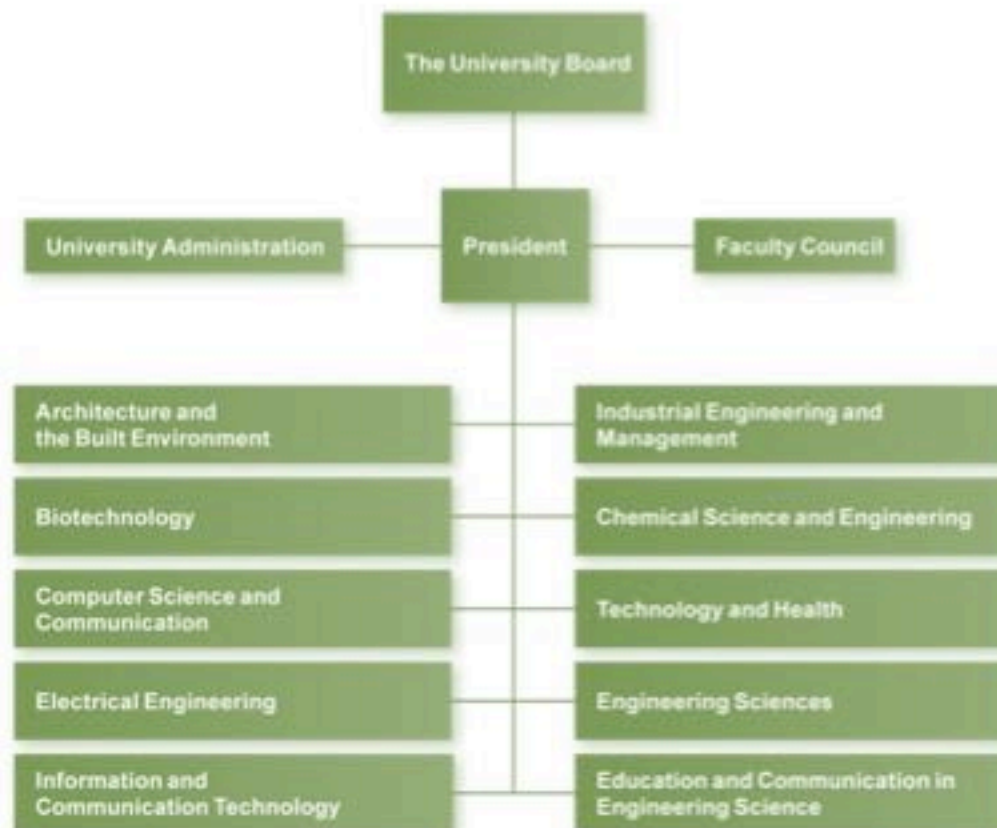
KTH's history

- 2010** SciLifeLabs is established as a collaboration between four universities with the support of the Swedish Government
- 2001** AlbaNova, the Stockholm Center for Physics, Astronomy and Biotechnology is launched
- 1999** KTH is established in Kista
- 1970** Hannes Alfvén, Professor at KTH, is awarded the Nobel Prize in Physics
- 1954** Sweden's first nuclear reactor is launched 30 meters below ground at KTH Campus
Sweden's first official television broadcast is sent from KTH
- 1917** moves to new premises on Valhallavägen
- 1877** The name Kungliga Tekniska högskolan is established
- 1827** The Institute of Technology is launched





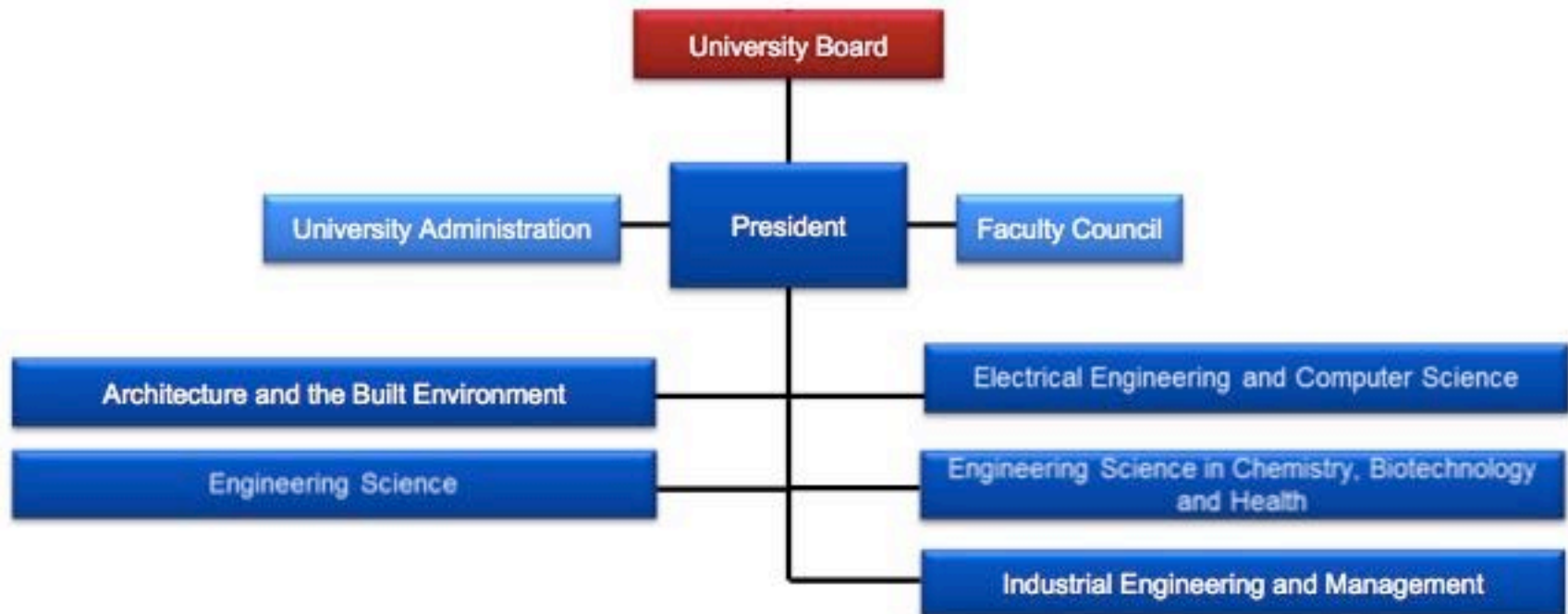
KTH's organisation



2014



Organisation





A top-ranked institution

Times Higher Education (THE)

- 30th in Engineering and Technology
- 52nd best university in Europe
- The world's 126th best university



QS World University Ranking

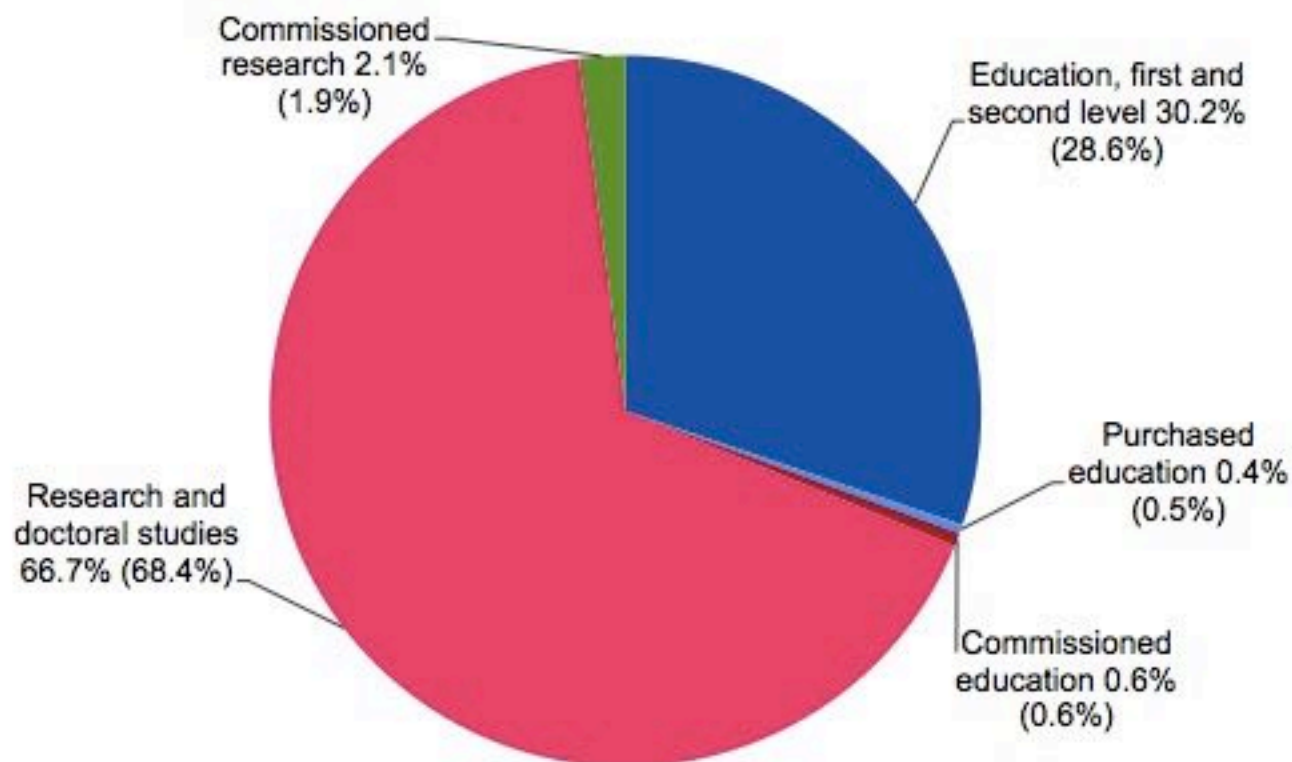
- Ranked 16 in the world in Electrical Engineering
- Ranked 21 in the world in Architecture and Built Environment
- Ranked 25 in the world in Mechanical Engineering



Figures for 2014 and 2015

Research-based operations

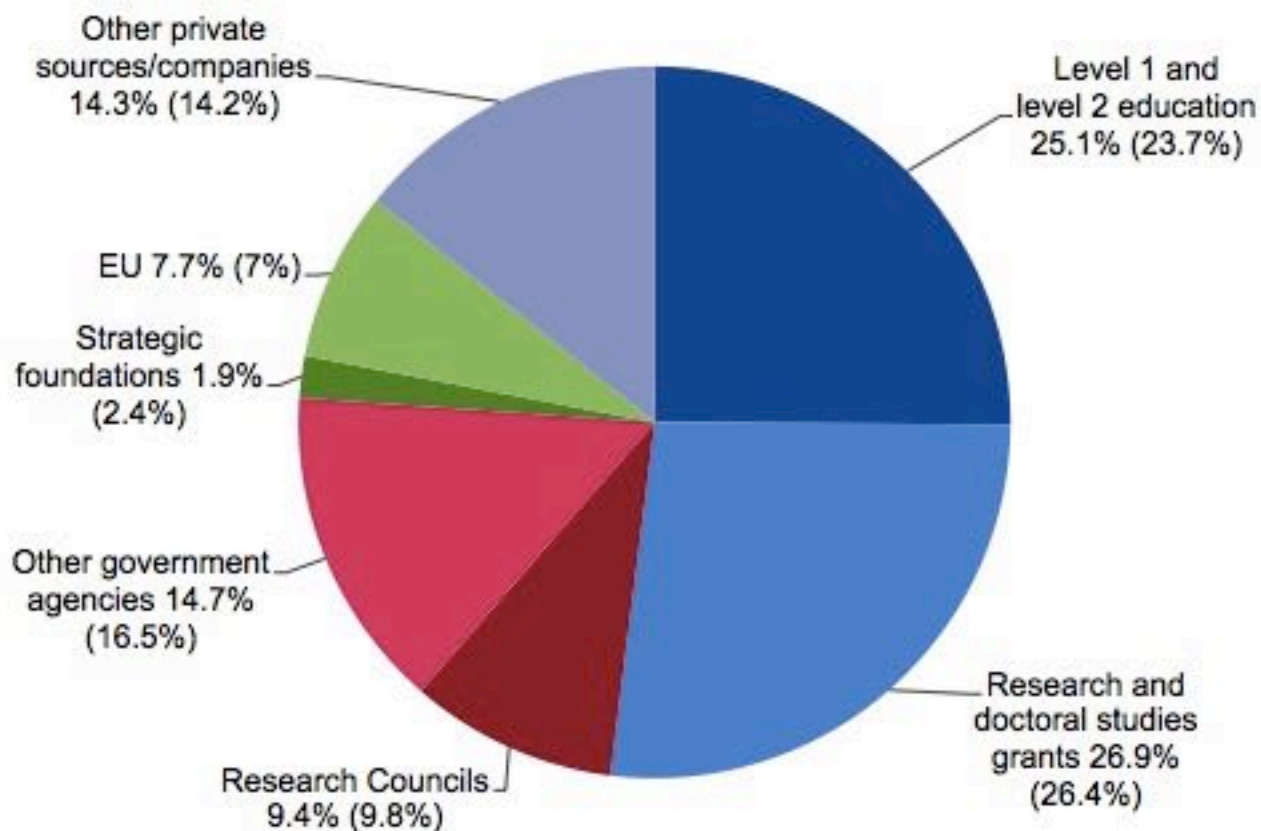
Total Revenue SEK 4,243 (4,038) million



Figures for 2014 (2013)

KTH's funding

Total Revenue SEK 4,243 (4,038) million



Figures for 2014 (2013)

Research for Sweden's competitiveness

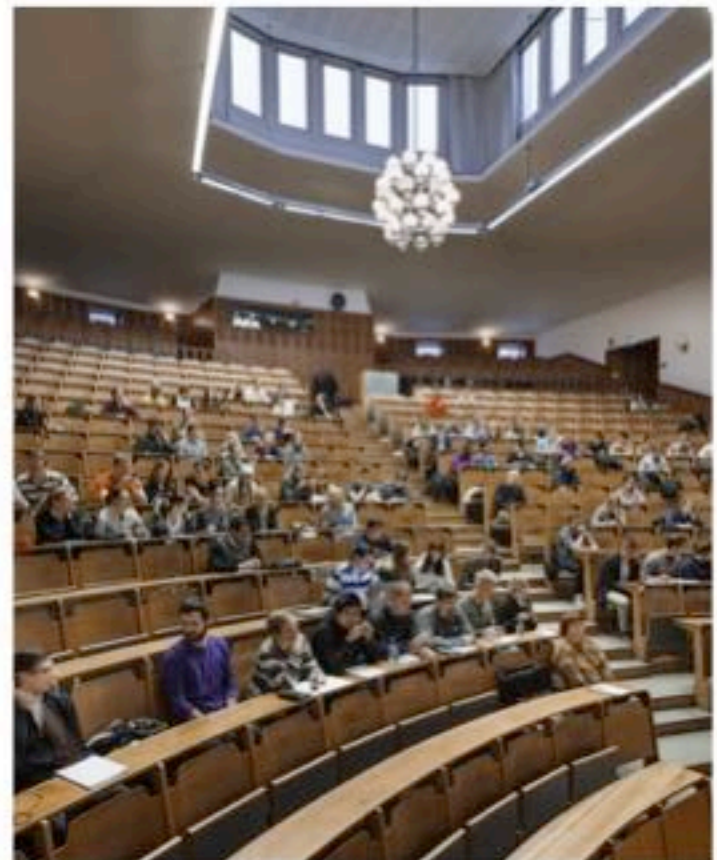
- Broad research, from science to community planning
- Research involves more than 3,000 colleagues
 - More than 600 people belong to the Faculty
 - Approximately 300 Professors, of which 47 are women
 - More than 1,900 PhD Students
- More than 60 Adjunct Professors



Figures for 2014

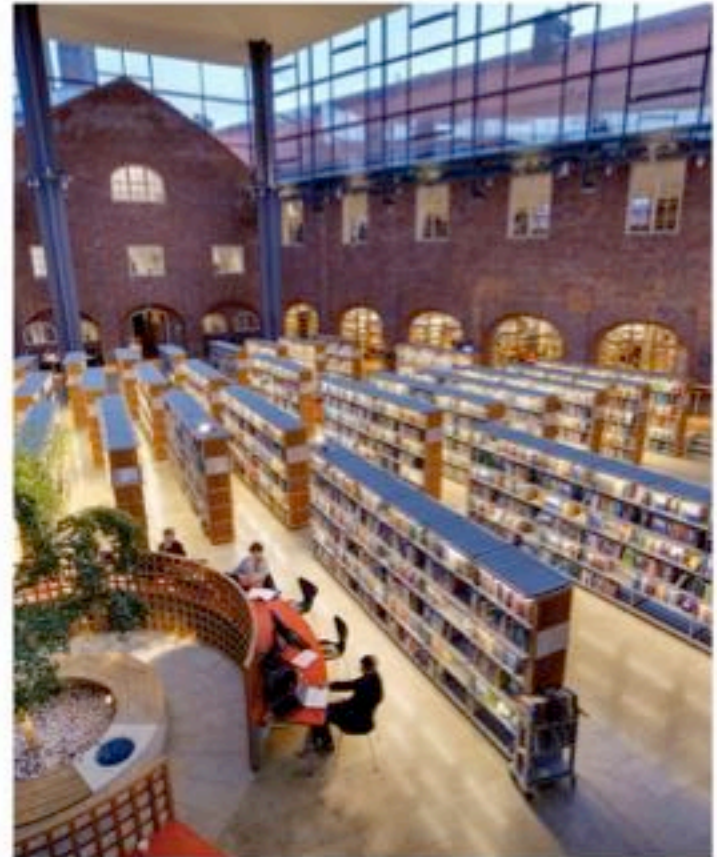
High quality programmes

- KTH educates students to become Masters of Architecture Masters and Bachelors of Science in Engineering, teachers, Licentiates and PhDs
- More than 12,000 full-time students, of which 32 per cent are women
- KTH's programmes have strong links to research and industry

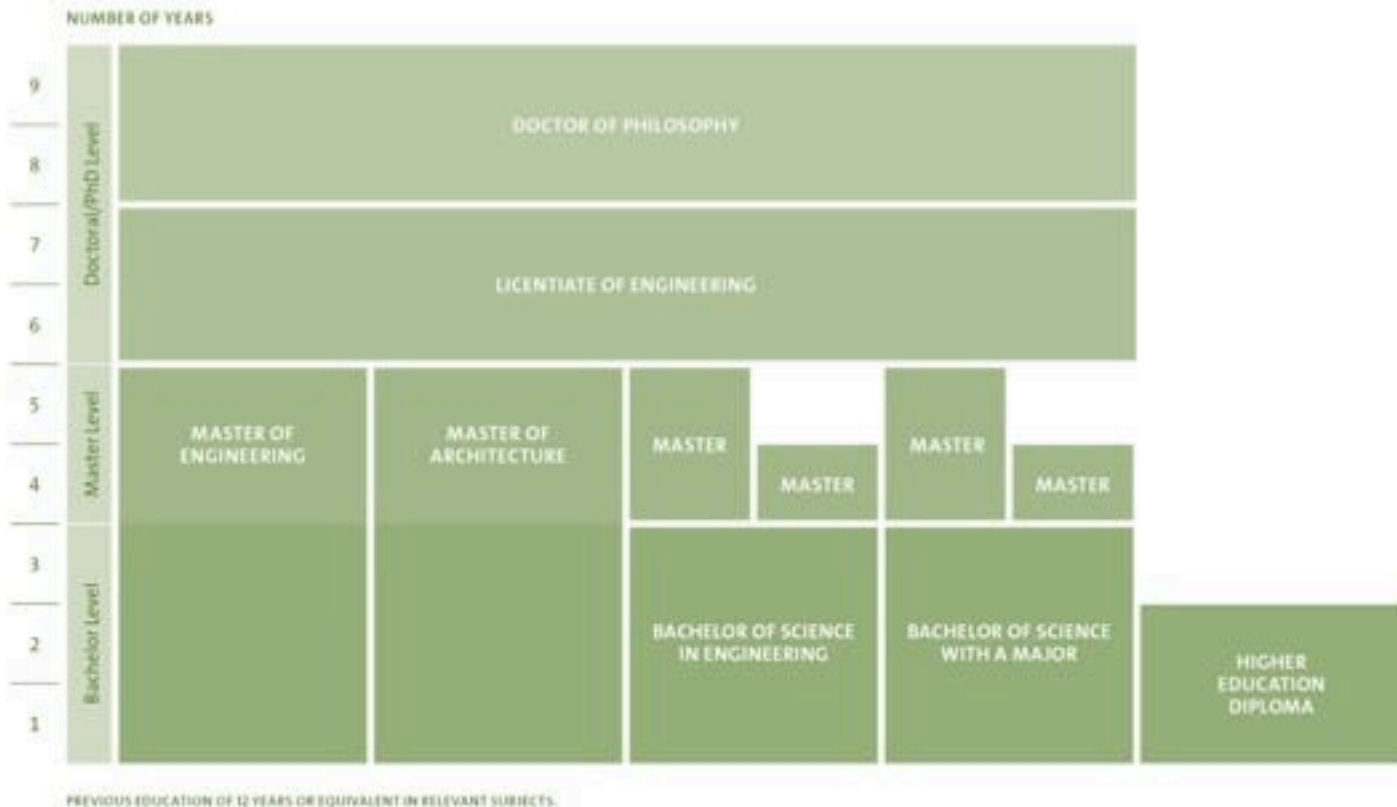


An international university

- Students and personnel from more than 100 countries
- English-language programmes
- Double degree programmes
- Degree projects abroad
- Exchange studies
- International alliances, e.g., CLUSTER and INSPIRE



Degrees adapted to the Bologna Process





A wide range of programmes

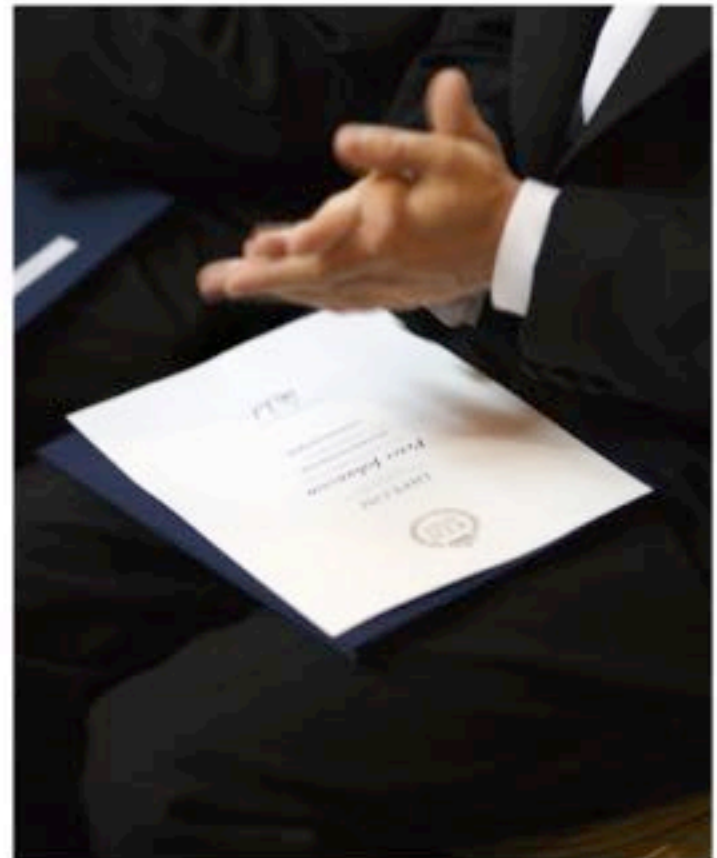
Programmes in

- Architecture and the Built Environment
- Computer Science and Electrical Engineering
- Energy and Sustainable Development
- Industrial Management and Innovation
- Information and Communication Technology
- Life Science Technology
- Teacher Education
- Mechanical Engineering
- Materials Science
- Engineering Physics and Mathematics



Over 3,000 degrees per year

- 100 architects, of which 49 per cent are women
- 1,141 Masters of Science in Engineering, of which 30 per cent are women
- 353 Bachelors of Science in Engineering, of which 27 per cent are women
- 1,244 Master's degrees, of which 30 per cent are women
- 279 PhD degrees, of which 25 per cent are women



Figures for 2014

World-class career opportunities

- 67 per cent get their dream job with a degree from KTH
- 52 per cent receive job offers before they graduate
- 87 per cent get a job within six months after graduation
- 93 per cent get a job within one year



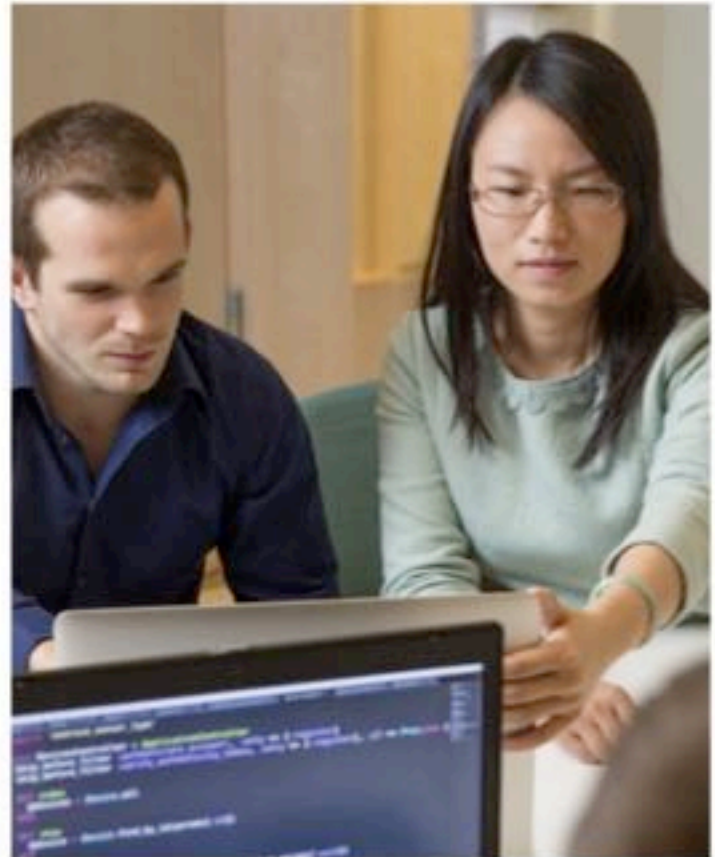
Figures from the most recent Career Report (2014)



An attractive university for doctoral students

1,900 doctoral students
30 per cent are women

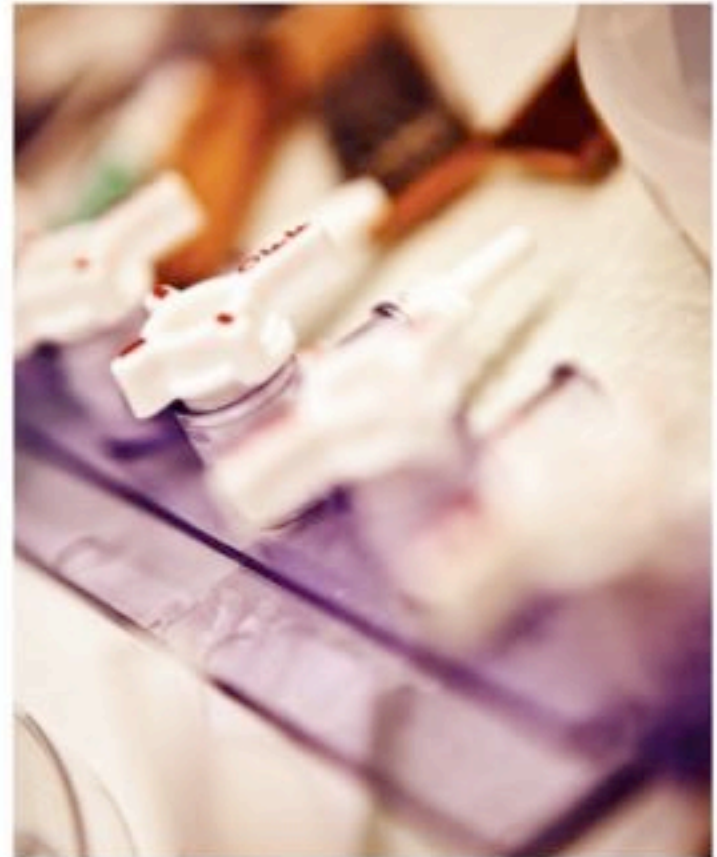
279 PhD degrees
26 per cent are women



Figures for 2014

KTH conducts research with the rest of the world

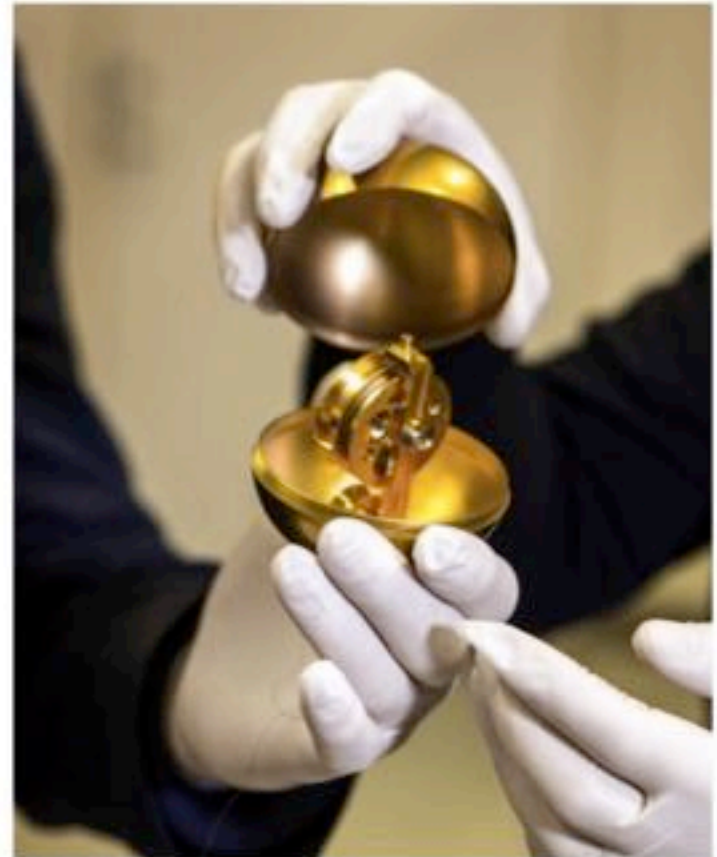
- International research cooperation
 - 59% of publications are international joint publications
- Leading partner within two of the European Institute of Innovation and Technology's (EIT) Knowledge and Innovation Communities (KIC).
 - InnoEnergy
 - ICTLabs
- Part of SciLifeLab, a national centre together with Karolinska Institutet (KI), Stockholm University (SU) and Uppsala University (UU)



Figures for 2014

World-class research

- Energy
- Information Technology
- Biotechnology/
Life Sciences
- Materials
- Transport



The President of the USA visited KTH in 2013

- In the autumn of 2013, Barack Obama visited KTH together with the former Prime Minister, Fredrik Reinfeldt
- The focus of the visit was innovations within the fields of environmental engineering and renewable energy



KTH researchers Rakel Wreland Lindström and Carina Lagergren show President Obama how a fuel cell charger works.

KTH research platforms

Energy

Technologies and systems supporting sustainable global energy systems.

Information and Communication Technology

Focuses on fields such as microelectronics, nanotechnology, photonics and wireless sensor networks.



KTH Research platforms cont.

Materials

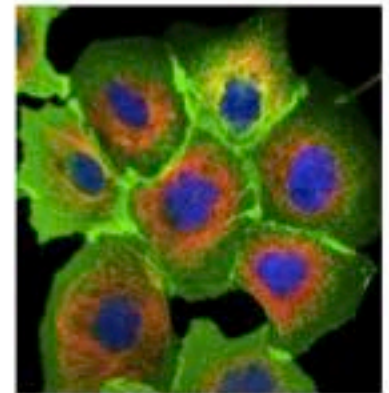
Spans from chemistry, fibre and polymer technology to biotechnology, mechanics and process technology.

Medical and Biomedical Technology

Recognised international research leader in the borderland between technology, natural sciences and medicine, including e.g. the mapping of all human proteins.

Transport

Various disciplines, from vehicle technology and infrastructure to policy formulation and evaluation.



Ideas and companies by KTH students

Spotify

Rapidly expanding on-demand music streaming service

More than 10 million users



Tobii

Eye tracking technology

Market-leader to industrial partners

Winner of Bully Award 2011





Core values at KTH

KTH's core values are based on democracy, the equal value of human beings, human rights and freedom and free and open discussion. Equality between men and women and the dissociation from all forms of discrimination are both an issue of quality and a natural part of KTH's core values. Equality and diversity among employees and students also represent important resources for KTH.



Openness and equal opportunities: from legislation to policies and actions

Swedish legislation which lays ground for operation of public universities:

- Higher Education Act
- Higher Education Ordinance
- Work environment law
- Discrimination Law
- Parental leave law
- Discrimination Ombudsman



Openness and equal opportunities: from legislation to policies and actions

Work environment at KTH:

- Work environment policy
- Systematic work on enabling functioning work environment
- Work Environmental Plan
- Occupational healthcare and preventive healthcare
- Stress treatment
- Employee survey



Openness and equal opportunities: from legislation to policies and actions

Continuous work against discrimination:

- Discrimination act
- Contact persons for help and support
- Introductory course for new employees
- University regulation on handling cases of discrimination, harassment, sexual harassment and inappropriate treatment
- Discrimination ombudsman

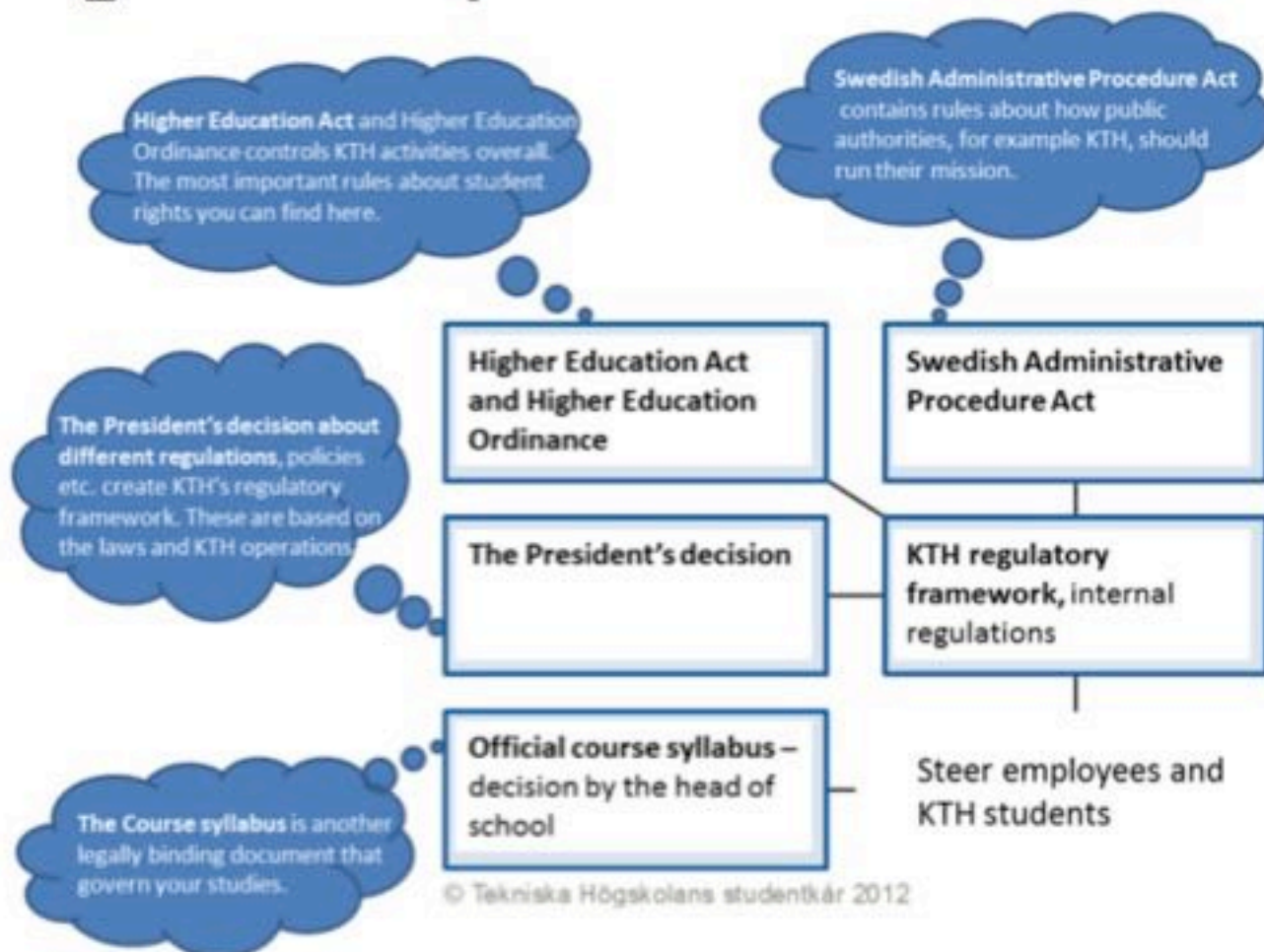


Openness and equal opportunities: from legislation to policies and actions

Support and equal treatment of students:

- Student Union: organizes work with and for students
- Support for students with disabilities
- KTH Internal study councillor
- Student health
- Appealing against the university decision

Openness and equal opportunities: from legislation to policies and actions



Stockholm – one of the most livable cities in the world

Nobel Prize Award Ceremony

One of the most livable cities in the world according to Monocle

Tight relationship between academia and business

UN Human Development Index

Early adopters of new technology and trends

Clean, tidy, safe

English speaking

